



WEEK AT A GLANCE

HOMMA ELEMENTARY SCHOOL



May 15-19

Monday, May 15

Tuesday, May 16

Wednesday, May 17

Thursday, May 18

Friday, May 19

Welcome to Kindergarten

PAC AGM in person
6:30pm

Saleema Noon Student Workshop

Saleema Noon Student Workshop



SPIRIT WEEK

Important Dates

- May 22.....Victoria Day (No School)
- May 24.....Class & Panorama Photos
- May 25.....Jeans Day
- May 26.....Homma Family Fair
- June 09.....Sports Day
- June 16.....Rain Out Day for Sports Day
- June 23.....Grade 7 Farewell

Reminders

Please report any absences, lates, early dismissals, etc. to our
Early Warning Line at (604) 668-6491

Let us know your child's name, division and WHY they are away and for how long.

If your child(ren) will be arriving late, please make sure to sign in so that we can adjust their attendance.

thank you!

Daily Health Check

SHOULD I GO TO SCHOOL TODAY?

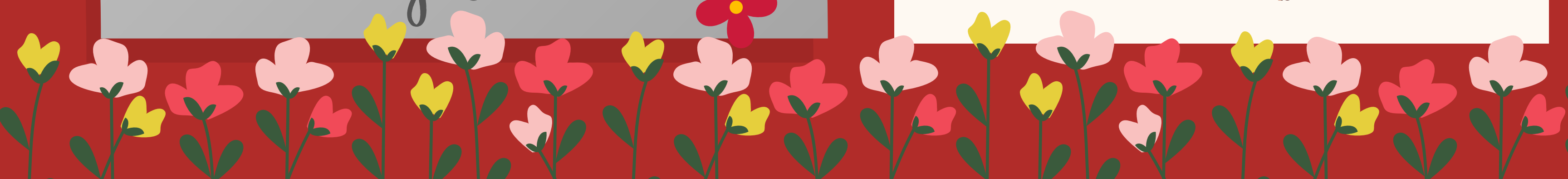
We appreciate your support in keeping your child home when they are not feeling well.

Students should not come to school when they are sick.

If your child is not feeling well please continue to keep them home until their symptoms have resolved. If you know your child will be absent for a range of days, please leave that information as well.

Staying home when sick helps keep our entire school community healthy including teachers, admin staff and students. **Please do your part and stay home when sick.**

Click here for the health assessment



SPIRIT WEEK

The Homma Leadership Committee is planning a Spirit Week from May 15-18.

Let's show our Homma spirit!

MONDAY

- Twin/Trio/Group day. Join a friend or a group and dress similarly.

TUESDAY

- PJ Day! Wear your favourite pyjamas



WEDNESDAY

- Homma Spirit Day. Wear Homma colours or wear your Homma t-shirt, hoodie, etc.

THURSDAY

- Rainbow Day. We have assigned each division a colour. Do your best to wear the colour (and if not, wear one from the list).

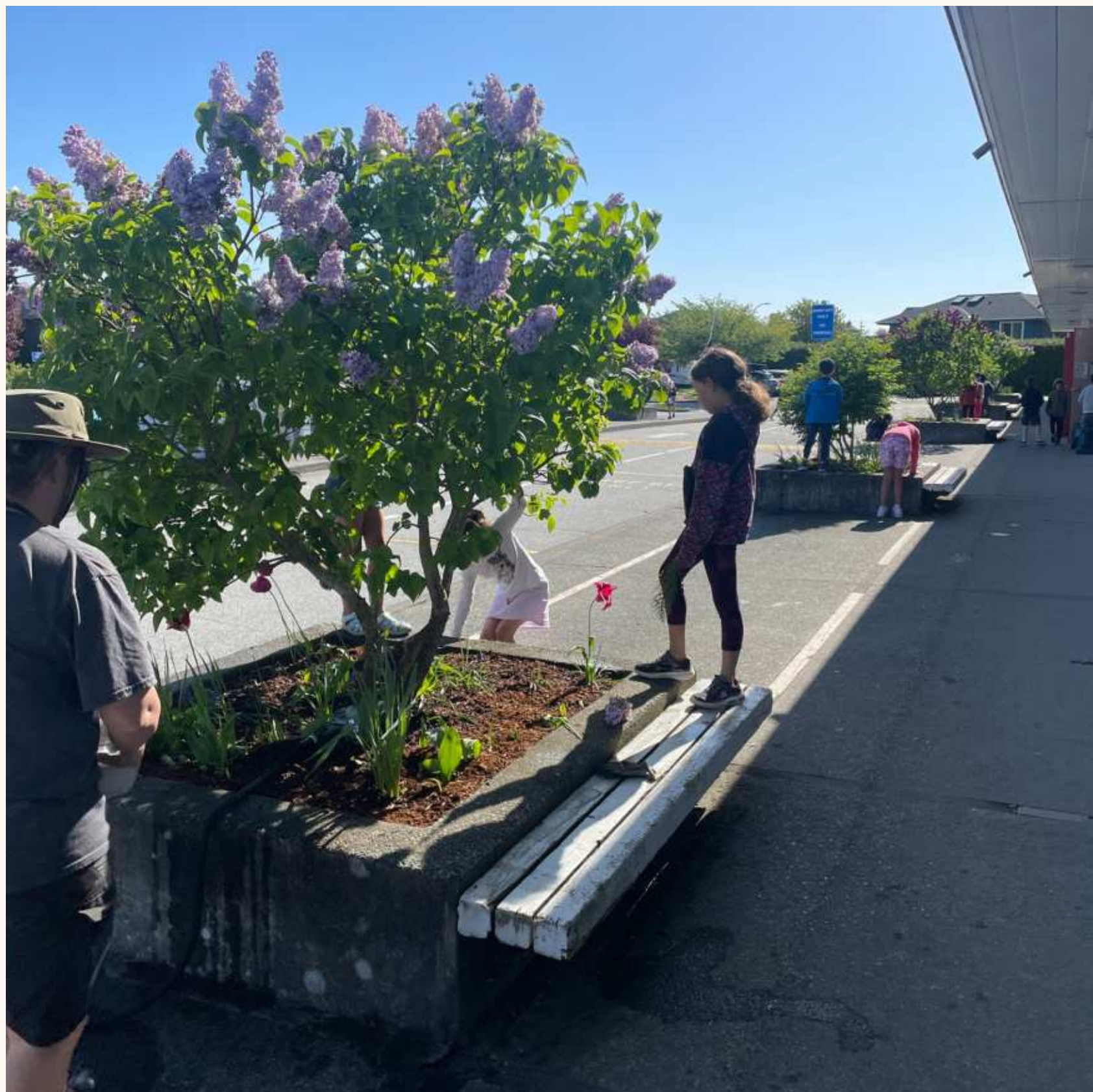


- **red** - Ms. Tsai, Mme Courtemanche, Mr Dempsey, Mme Bugden
- **orange** - Ms. Parkes, Mme Blomquist/Mme Roozbeh
- **yellow** - Ms. Rennie, M Autio, Ms. Yau
- **green** - M Redding, Mme Joinville, Ms. Chan/Ms. Freston, Ms. O'Leary, Mme Lisa
- **blue** - Mme Smith, Mme Kohn, Ms. Blue/Ms. Bird, Mr. Wolber, Ms. Szelagowicz
- **pink/purple** - Mr Wood, Mme Back/Boutin, Mme Yau, Ms. Kerr



MINORU TRACK MEET





HOMMA HIGHLIGHTS



Save
THE
Date

Grade 7 Farewell

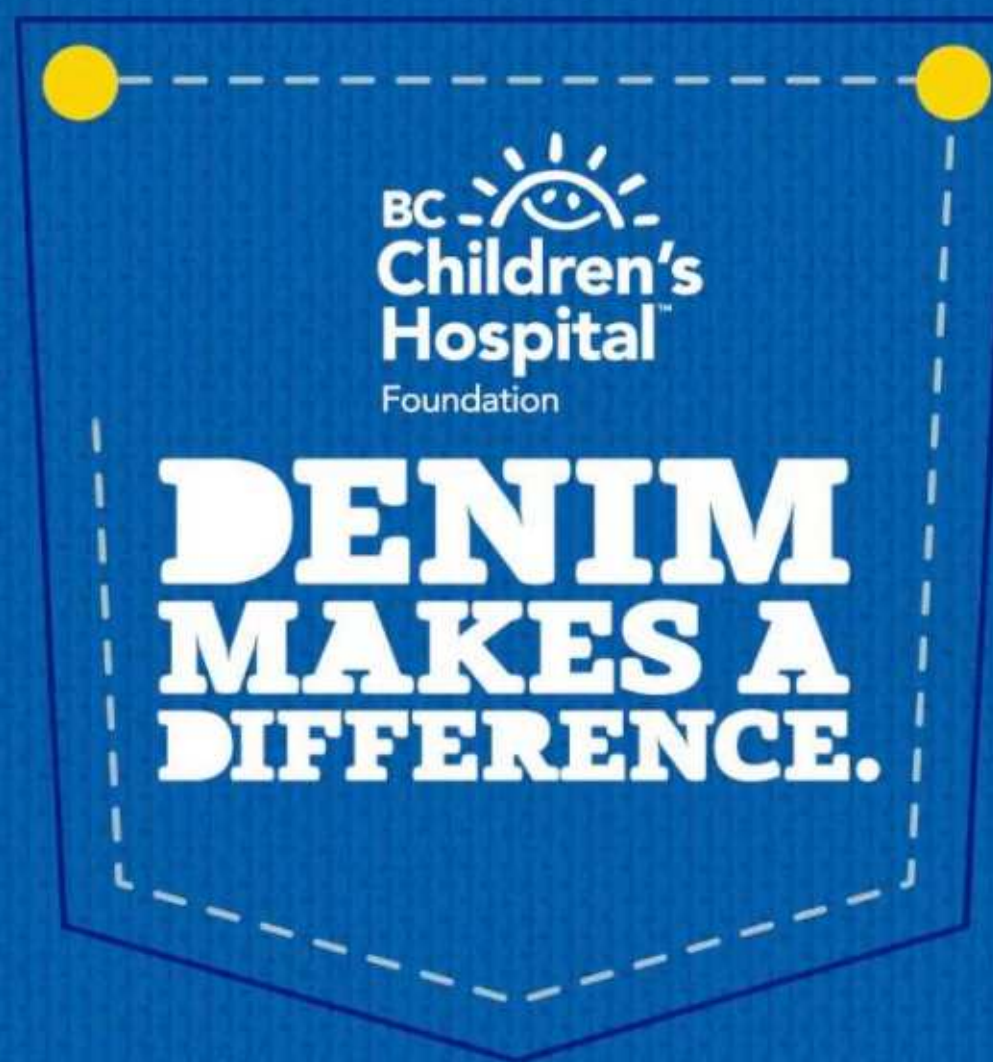
Friday, June 23

at 9am

Class of
2023



MAY
25



This May, we're helping kids at BC Children's Hospital get out of their hospital gowns and back into their jeans.

As the only children's hospital in the province, kids count on BC Children's for specialized care they often can't receive anywhere else. Although many strides have been made in improving children's health care, so much more needs to be done. You can make a big difference in the lives of children and families with serious and life-long childhood diseases across our province.

Plus, your donation will be generously matched by Odlum Brown*, so don't miss this chance to double your impact and help support us by making a secure online donation to my fundraising page. Thank you for your support.

Click here to donate <https://secured.bcchf.ca/registrator/TeamFundraisingPage.aspx?teamID=998809&langPref=en-CA>

* Gifts will be matched from May 1-31, up to a cumulative total of \$30,000.



NEWS



All parents and guardians of children who attend Homma Elementary School are members of the Homma PAC and are crucial partners in creating a rich and fulfilling school experience for our children.



PAC AGM Reminder:

The Homma PAC Annual General Meeting (AGM) will be hosted from 6:30 to 8:00 pm on Tuesday, May 16 in the School Library (in-person)! The AGM is when we vote for executive positions and the new budget, including funding for school projects, so your vote is so important! If you are interested in a role on the PAC Executive, please contact us! Both the Chair and Treasurer are leaving the school next year, so we REALLY need new support to ensure continuous support for our school community!! Please contact Mr. Cherry if you are interested in an executive position.

The Homma Family Fair is two weeks away!
We hope to see you on Friday, May 26 (5:30 to 8:00 PM)!

Don't miss out on your chance to support this fun event - we now have 23 more volunteer shifts to fill! Sign up at <https://www.signupgenius.com/go/10c0944a8a828a5f9c52-homma#/>



Let us know your food preferences by completing this form: <https://docs.google.com/forms/d/e/1FAIpQLSd1PRofpBU0waqsJd6Zzl2dKIEtTerVkdVmQaPqzsjBfDp5OA/viewform>. We would like to help our food vendors plan and prevent food waste. This is not a pre-order but will give us an idea of how much food to have available at the fair. In addition to the items listed, we will have juice, water, popcorn, cotton candy, snow cones, freezies, pop and candy.

Donations are needed - small prizes (stickers, dollar store items, stationary), wine (please drop off bottles at the office) and nut-free cakes (delivered to the school on May 26th).

Thank you for your help and support!

Family Photos Fundraiser:

There are only four spots left for the family mini photo shoot with Erica Matewish of Pure and Sweet Photography.

When: June 11

Location: Britannia Shipyards

Shoot details: Cost is \$35, which goes directly to the PAC

Includes a 20 Minute session with an online gallery - where you are able to select 1 digital image. If you like to purchase additional images, they are 5 for \$125 or the entire gallery for \$175



To book one of the last remaining spots, please follow the link:

<https://pureandsweetphotography.bigcartel.com/product/tomekichi-homma-elementary-pac-fundraiser>

RICHMOND
SCHOOL DISTRICT NO. 38

**CONTINUING
EDUCATION**

Summer 2023

LEARN WITH US!

齊來學習



RichmondCE.ca
604-668-6123

HIGH QUALITY
CHOICES
AFFORDABLE
& ACCESSIBLE
PROGRAMS

Your Attention Richmond families!

Did you know that many of Richmond Continuing Education Summer Learning Programs are FREE for BC students who are Canadian Citizens, Permanent Residents and students who have Refugee status?

With an array of exciting and enriching courses and camps to choose from, your child is sure to have a memorable summer. Choose from Elementary Enrichment, Summer Exploration, Summer Fine Arts, Academic Full Credit, Academic Completion, Secondary Enrichment, and Secondary Enrichment Skill Building Courses. We also offer Summer Camps for both elementary and secondary students, with options for ages 6-16.

Don't miss out on this opportunity to grow and learn in a fun and engaging way! Keep your child's learning journey going strong this summer and sign up now for Summer Learning 2023.

For more information go to our website at www.RichmondCE.ca

SWIS

Settlement Workers
In Schools

SWIS CALENDAR - MAY 2023

Families

May 2	May 3	May 4	May 8 & 15	May 16	May 16	May 17
Adult Conversation Evening Circle 	Preparing to Graduate 	Child Resources and Subsidy 	Nobody is Perfect 	Energy Saving Workshop 	Adult Conversation Evening Circle 	Getting Ready for Kindergarten 
May 17	May 17	May 18	May 25	May 30	Every Friday AM	
Family Arts Project 	Kare4Kids 	Group Summer Activities 	Nature Park Field Trip 	Adult Conversation Evening Circle 	Adult Conversation Circle 	

Youth SWIS Activities

May 13	May 16	May 25	May 27	Every Thursdays	Bi-Weekly in Schools
Lynn Valley Field Trip 	Girls Supporting Girls 	Improv Games 	Grad Celebration 	Every Thursdays 	Bi-Weekly in Schools 

SWIS RICHMOND SCHOOL DISTRICT
Settlement Workers
In Schools

RICHMOND
SCHOOL DISTRICT NO. 38



Immigration, Refugees
and Citizenship Canada

Immigration, Réfugiés
et Citoyenneté Canada

Settlement workers in schools (SWIS) programs provide settlement support for immigrants, refugees and newcomers to help you adjust to your new surroundings.

Please see the attached MAY CALENDAR for SWIS workshops and activities available this month.

For registration to any of the above workshops, please refer to the attached document on MAY 5 WAAG for links.



DROP OFF LANE AND PARKING LOT SAFETY

To ensure the safety of all students, **please do not park in the drop off lane and NO PARKING Zones** (you may be ticketed) to bring your child into the school as it disrupts the flow of traffic.

It would be **very helpful for cars not to left turn from Brunswick Dr** into the parking lot. Cars are unable to exit the parking lot thus causing an extreme back up for drop offs.

Please pull up as far as possible in the drop off lane when coming to school in the mornings.

Street parking is available on Railway Ave.

At the **end of the day, the drop off lane is closed** to vehicles and we ask that you do not remove the parking lot chain to enter.

As we are part of the community, we ask that we are courteous and respectful to our neighbours.

Thank you for your support with this.



Dress for the weather!

As our weather is changing and the rain starting, it might be helpful to bring:



winter coat



rain coat



rain boots



mittens



touque



scarf



extra clothing including socks