



WEEK AT A GLANCE

HOMMA ELEMENTARY SCHOOL

September 11-15

Monday, Sept 11

All students begin the day in their new classrooms

Tuesday, Sept 12

Wednesday, Sept 13

Thursday, Sept 14

Friday, Sept 15

Welcome
**BACK TO
SCHOOL**

This week we welcomed 534 students and their families back to school. Seeing smiles on children's faces and hearing the excitement in the air reminds us all of the anticipation of another school year. This year we are looking forward to continuing to support students in their learning as well as the opportunity to build community within the school. We want to thank everyone for their patience and understanding this week as we have worked through September start up at Homma. Looking forward to a great year of learning and growing!

Class Placements

Today your child was placed into their class for the school year. We understand that this is an exciting time, but it can also be a bit overwhelming for some students. We want to reassure you that we are aware of how students may respond to change and recognize that change for some will take time. We also want families to know that there has been a lot of thought put into class placements by staff. The process is complex and requires a lot of discussion and care. Please understand that your child's class placement has been a product of many conversations and they have been placed in a learning environment that best suits their needs.

Daily Health Check

SHOULD I GO TO SCHOOL TODAY?

We appreciate your support in keeping your child home when they are not feeling well. **Students should not come to school when they are sick.**

If your child is not feeling well please continue to keep them home until their symptoms have resolved. If you know your child will be absent for a range of days, please leave that information as well.

Staying home when sick helps keep our entire school community healthy including teachers, admin staff and students. **Please do your part and stay home when sick.**





Important Dates

Sept 21.....Meet the Teacher
Sept 22.....Pro D Day
Sept 30.....Truth & Reconciliation
Oct 02.....NO SCHOOL
Oct 09.....Thanksgiving-NO SCHOOL
Oct 17.....PAC Meeting
Oct 18.....Immunization Clinic
Oct 20.....Pro D Day
Oct 23.....Photo Day



Equity, Diversity & Inclusion Calendar for September

15-17.....Rosh Hashana 🕯
24.....Kol Nidrei 🕯
24-25.....Yom Kippur 🕯
26-27.....Mawlik-al-Nabi 🌙
30.....National Day of Truth
& Reconciliation/Orange Shirt Day

Welcome to Our New Staff

We are excited to be welcoming the following new staff members to Homma Elementary:

- Mlle Ginny Lee - Vice Principal
- Mme Kelly Burt - grade 4/5 EFI
- Mme Emily Frose - grade 2/3 EFI
- Ms. Mo Yan - music/band teacher
- Mme Reiko Domai - LRT/ELL
- Mr. Kenny Hall - ELL/Resource
- Mr. Ashwyn Dholliwar - EA
- Mr. Doug Sargeant - EA
- Mr. Timothy Lin - ELL

Thank you

Summer Garden Volunteers

We would like to give a HUGE thank you to the families that helped to keep our garden alive and thriving over the summer months. Without your time and commitment watering our garden it would not look as wonderful as it does for our students arrival back at school this past week. This week the students were able to harvest and sample tomatoes, cucamelons, rhubarb, cucumbers, and raspberries because these crops were well taken care of over the summer. THANK YOU

Mrs. Sarah Regan



Meet the Staff
Thursday, September 21
5:30-6:30pm



We are looking forward to being able to host a Meet the Staff evening. This year we will be inviting families to the school to connect with their child's teacher from 5:30 to 6:00 pm. We will be arranging to have pizza ordered for the evening. The event will end at 6:30 pm. More information about pre-ordering and the evening will be coming out next week.



The Terry Fox Run will be taking place on Thursday, September 21st. We will start accepting donations on Monday, September 18th.



New Bell Schedule

- 8:40 am.....Warning Bell
- 8:45 am.....Classes Begins
- 10:15 - 10:30 am.....Recess
- 11:50am - 12:05pm.....Eating Lunch Inside
- 12:05 - 12:42pm.....Outside Lunch
- 2:45 pm.....Dismissal



Have you checked out the Homma Website?

- get the latest news
- check out the latest WAAG
- calendar events
- important information
- and much more.....



homma.sd38.bc.ca



DRESSING FOR THE WEATHER

It is hard to think about rainy weather with all of the sunshine we have had this summer. We believe that time spent outside is important to student health, well being and learning. At Homma, we plan for "West Coast 4 Weather" and we will be outside for recess, lunch and outdoor learning in rain or shine. Please help your child feel comfortable by sending them in weather appropriate clothing such as jackets and boots. Students may also benefit from having a change of clothing and shoes at school. For our younger students, please practice putting their jackets and boots on and off. We will be outside in most weather conditions throughout the fall and winter.



HOW WE LEARN AND WORK TOGETHER

The Board of Education recognizes its obligation to provide all members of our school district community with a positive climate and a safe, healthy environment.

As we learn and work together, we will...

- 1 Show respect for the diversity of the members of our school and district community.
- 2 Behave in a safe, considerate and courteous manner.
- 3 Not threaten, harass, intimidate or assault, in any way, any person within our school district community, through physical violence, print or electronic media.
- 4 Not be in possession of weapons, dangerous articles, alcohol or illegal drugs while in school or work.
- 5 Show respect and pride in our school district buildings and equipment through care and appropriate use of school district property. Respect the non smoking environment of our schools and school district facilities.
- 6

Our expectations for how we learn and work together shall apply to everyone in our schools and at school functions.

The complete code of conduct
is available online at:
sd38.bc.ca/codeofconduct





If your child needs to leave school early.....

If your child needs to leave early for an appointment or needs to be pulled from school for any reason, **PLEASE** email your teacher and the Homma Office homma@sd38.bc.ca

This will be less disruptive to the rest of the class if the teacher knows ahead of time that a student will be leaving. Thank you!



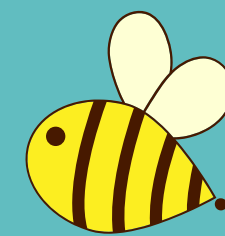
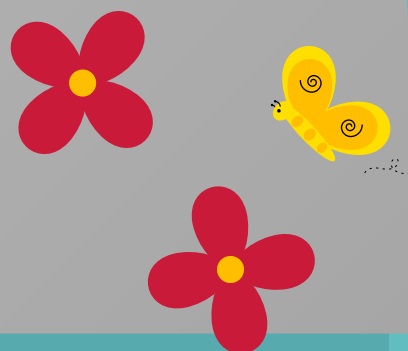
Reminders

Please report any absences, lates, early dismissals, etc. to our **Early Warning Line at (604) 668-6491**

Let us know your child's name, division and WHY they are away and for how long.

If your child(ren) will be arriving late, please make sure to sign in so that we can adjust their attendance.

Thank you!



DROP OFF LANE AND PARKING LOT SAFETY

To ensure the safety of all students, **please do not park in the drop off lane and NO PARKING Zones** (you may be ticketed) to bring your child into the school as it disrupts the flow of traffic.

It would be **very helpful** for cars **not to left turn** from Brunswick Dr into the parking lot. Cars are unable to exit the parking lot thus causing an extreme back up for drop offs.

Please pull up as far as possible in the drop off lane when coming to school in the mornings.

Street parking is available on Railway Ave.

At the **end of the day**, the **drop off lane is closed** to vehicles and we ask that you do not remove the parking lot chain to enter.

As we are part of the community, please be mindful when parking on the streets in the surrounding area and do not block our neighbours' driveways. Thank you for being courteous and respectful to our neighbours.



Thank you for your support with this.



Community Services Pop Ups

Get Connected!

Drop by our **free monthly pop ups** and meet local service organizations who can help connect you to all kinds of resources, all in one place:

 <p>Affordable rental housing information</p>	 <p>Navigating health care and benefit systems</p>
<p>Digital literacy supports</p> 	<p>Newcomer supports</p> 
 <p>Family-based programs and services</p>	 <p>Employment supports</p>
<p>Plus connections to community food supports and other community programs and assistance.</p>	

Second Thursday of every month
3:00 - 5:00 pm

Brighthouse Library, 100-7700 Minoru Gate



For more information, please visit:
www.richmond.ca/culture/social/accessibility/resources