

WEEK AT A GLANCE



HOMMA ELEMENTARY SCHOOL



November 28 - December 2

<p>Monday, Nov. 28</p>	<p>Tuesday, Nov. 29 Running Club 7:55am PAC mtg at 6:30pm *link on website & in the WAAG Volleyball Homma @ Byng</p>	<p>Wednesday, Nov. 30 Div 9 - Walking Field Trip to Steveston Library</p>	<p>Thursday, Dec. 1</p>	<p>Friday, Dec. 2 Hot Lunch</p>
------------------------	---	--	-------------------------	--

Important Dates

- Nov. 29** - PAC Meeting *link on website and below
- Dec. 3** - International Day of Persons with Disabilities
- Dec. 6** - National Day of Remembrance and Action on Violence Against Women
- Dec. 10** - Human Rights Day
- Dec. 13** - French Immersion Winter Concert
- Dec. 14** - English Winter Concert

Daily Health Check

SHOULD I GO TO SCHOOL TODAY?

We appreciate your support in keeping your child home when they are not feeling well. **Students should not come to school when they are sick.** If your child is not feeling well please continue to keep them home until their symptoms have resolved. If you know your child will be absent for a range of days, please leave that information as well.



Have you lost something?

Our LOST AND FOUND is overflowing!!



Tables will be set up on Tuesday and Wednesday, Nov. 29 and Nov. 30, after school outside of the main doors.

Reminders

Please report any absences, lates, early dismissals, etc. to our **Early Warning Line at (604) 668-6491**

Let us know your child's name, division and WHY they are away and for how long

If your child(ren) will be arriving late, please drop off at the office in order for us to adjust attendance accordingly.

thank you!

HOMMA FOR THE HOLIDAYS

WINTER CONCERT



SAVE THE DATE:

FRENCH PERFORMANCE

TUESDAY, DECEMBER 13TH, 6:00PM-8:00PM

ENGLISH PERFORMANCE

WEDNESDAY, DECEMBER 14TH, 6:00PM-8:00PM

- **Due to limited gym capacity, we are asking only 2 people per family to attend (young children are welcome).**
- **We ask that students are dropped off on the evening(s) of the performance at 5:30pm at their usual pick up and drop off locations.**
- **Parents please line up starting at the front of the school along the west side of the building.**
- **We are planning to record each evening's performance and we will share a link with families so that they can also share with those who were unable to attend.**

Doors will open at just after 5:30pm

Shows will start at approx. 6:00pm

More information to come.....





NEWS



All parents and guardians of children who attend Homma Elementary School are members of the Homma PAC and are crucial partners in creating a rich and fulfilling school experience for our children.

Next PAC Meeting is Tuesday, November 29th

Join us at 6:30pm – 8:00pm.
Microsoft Teams meeting
Join on your computer or mobile app
[Click here to join the meeting](#)

[Learn More](#) | [Meeting options](#)

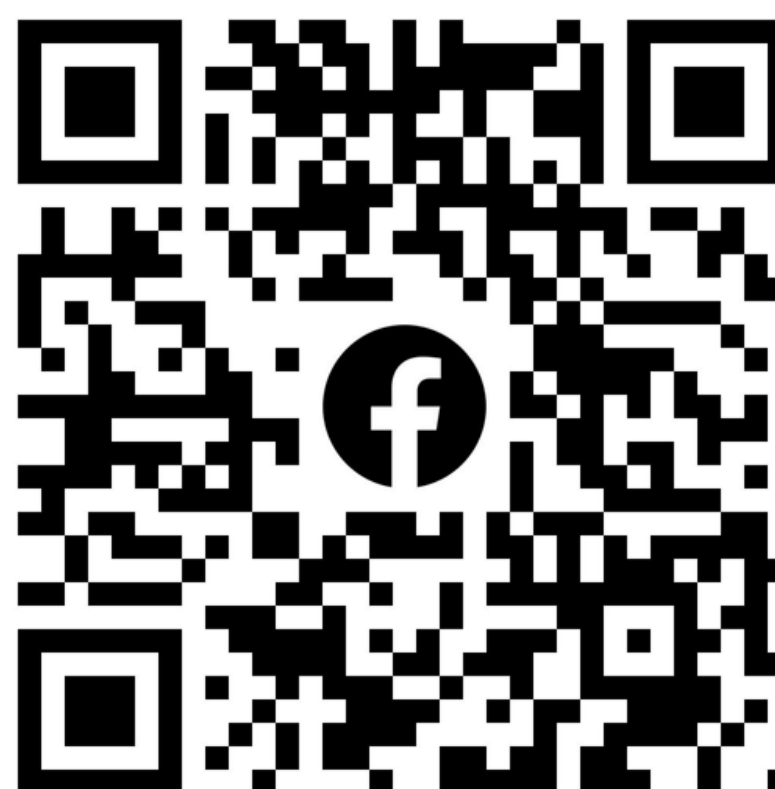
Thank
you!

A huge thank you for your support of our winter fundraisers! We collectively raised over \$2500 to support the Homma School Community.

Find us on 

Want to connect with other Homma Parents and Guardians? Please join our new Homma PAC Community Facebook group to ask questions, learn more about the school community and get timely reminders.

Facebook provides free QR codes to connect directly to the group. This is the one for ours:



Important Message



Learning is ongoing

Students come into every learning situation with their own experiences and background knowledge. A student does not necessarily begin at Emerging or Developing at the beginning of each school year. Similarly, students do not only reach Proficient at the end of the school year. Reaching proficiency is not the end of learning; if a student enters a learning experience with Proficient understanding or achieves proficiency during the school year, the goal becomes to further enhance their learning.



Letter grades and percentages for grades 10-12

Most universities and colleges currently use letter grades and percentages as part of the admissions process. To continue the successful transition of B.C. students to post-secondary learning, letter grades and percentages will remain in the graduation years. However, the Ministry of Education and Child Care will work with post-secondary institutions in the coming years to explore the use of the Provincial Proficiency Scale at Grades 10-12.



Ministry of Education and Child Care

REPORTING ON STUDENT LEARNING IS CHANGING IN B.C.

Brochure for Families

What is student reporting

Student reporting is the assessment and communication of student learning, often thought of as report cards. Every student in B.C. receives communications from the school throughout the school year that provide parents, caregivers, and students with information about student learning.

The way teachers and schools communicate student learning, and the format of traditional report cards is shifting.

Upcoming changes to student reporting

The K-12 Student Reporting Policy Framework ("the framework") is the result of many years of consultation and engagement with rightsholders, education partners, teachers, families, students, and the public.

The framework provides an overview of the upcoming changes to the K-12 Student Reporting Policy, set to be implemented in the 2023/24 school year.

Student Information

- Shifts in reporting are being made to ensure each student experiences success within the education system
- Student self-assessment of Core Competencies and goal setting gives every student input into their learning, including where they go next
- Graduation status update in Grades 10-12 ensures students know they are on track to graduate

What's new

- Student reporting practices that align with B.C.'s curriculum and provincial assessment system
- Provincial Proficiency Scale at Grades K-9
- Changing the "I" reporting symbol to "IE" to indicate "insufficient evidence" of learning instead of "incomplete" learning
- Student self-assessment of Core Competencies and goal setting, in all grades in the 3 written reports
- Graduation status updates at Grades 10-12
- All learners, including students with a disability or diverse ability, will receive regular communications of student learning in the same way as their peers in any other program

What's the same

- Timely and responsive feedback to families throughout the school year
- 5 communications of student learning; 3 written and 2 of flexible format
- Letter grades and percentages at Grades 10-12
- Written descriptive feedback to accompany scale or letter grade and percentage

CONTACT US

✉ student.reporting@gov.bc.ca

The Provincial Proficiency Scale

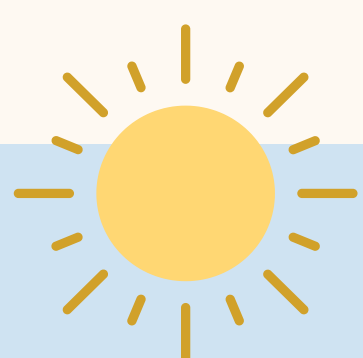
The use of the Provincial Proficiency Scale gives students, parents and caregivers a clear understanding of what students can do now and areas for future growth.

Reporting scales are already being used by all districts in the province. There are currently 17 or more known reporting scales in use. The introduction of the Provincial Proficiency Scale will provide consistency and alignment across B.C. schools.

	Emerging	Developing	Proficient	Extending
Proficiency Scale	The student demonstrates an initial understanding of the concepts and competencies relevant to the expected learning.	The student demonstrates a partial understanding of the concepts and competencies relevant to the expected learning.	The student demonstrates a complete understanding of the concepts and competencies relevant to the expected learning.	The student demonstrates a sophisticated understanding of the concepts and competencies relevant to the expected learning.

Benefits of the provincial proficiency scale and descriptive feedback

- Views learning as ongoing, rather than signaling learning is done
- Provides feedback, to both families and students, on where the student is at and how to help them move forward in their learning
- Supports lifelong learning by shifting the focus to developing competencies rather than the achievement of marks
- Maintains high provincial standards by focusing on helping all students attain proficiency in their learning



Dress for the weather!

As our weather is changing to cold and rain, it might be helpful to bring:



winter coat



rain coat



rain boots or winter boots



mittens



touque



scarf



extra clothing including socks



Kindergarten Registration

NOV • DEC • JAN

www.sd38.bc.ca/kindergarten



Richmond School District 38 is excited to welcome kindergarten registration applications for children born in 2018, turning 5 in 2023. These children will begin kindergarten in September 2023. Online registration opens on November 1, 2022. Please visit our website <http://www.sd38.bc.ca/kindergarten> for more information about our online registration process, required documents, important dates and FAQs.

Families are encouraged to register any time during the Priority 1 registration period (November - January) for the best chance at attending their catchment school. All registration applications received any time during the Priority 1 registration period will receive placement decisions by February 3, 2023.

Instead of in person information evenings this year, we have posted short videos that provide our new parents with information about the registration process, English Language Learner (ELL) assessments, and District Program Options - Early French Immersion and Montessori. These videos are available in English and Mandarin. Please view the videos at <http://www.sd38.bc.ca/kindergarten>.

Finally, there will be a Kindergarten Information Evening for parents of students with additional support needs on ZOOM held on November 16 from 6:30 - 7:30 p.m. A link to the Zoom meeting will be posted on the Kindergarten Registration website closer to the meeting date <http://www.sd38.bc.ca/kindergarten>

Thank you and please share this information with your friends and family who have Kindergarten aged children!



DROP OFF LANE AND PARKING LOT SAFETY

To ensure the safety of all students, please pull up as far as possible in the drop off lane when coming to school in the mornings.

It would be **very helpful for cars not to left turn from Brunswick Dr** into the parking lot. Cars are unable to exit the parking lot thus causing an extreme back up for drop offs.

Please **do not park in the drop off lane** to bring your child into the school as it disrupts the flow of traffic.

Street parking is available on Railway Ave.

At the **end of the day, the drop off lane is closed** to vehicles and we ask that you do not remove the parking lot chain to enter.

Thank you for your support with this.



LUNCH

Drop Off



For those families dropping off lunch for their child(ren), you are welcome to drop them off outside the office on the designated table.

Please make sure to have their **name and division number on the lunch.**

