



WEEK AT A GLANCE

HOMMA ELEMENTARY SCHOOL



April 17-21

Monday, Apr 17	Tuesday, Apr 18	Wednesday, Apr 19	Thursday, Apr 20	Friday, Apr 21
	Immunization Clinic Gr.K,6 and 7	Camp Jubilee Gr. 6 and 7		
				Hot Lunch Pizza Factory

Important Dates

April 19-21.....Camp Jubilee

April 21/22.....Ramadan Ends

April 25.....PAC Meeting

April 27.....Div 4/16 Heritage Fair

April 28.....Hot Lunch

May 09.....Track Meet

May 26.....Homma Spring Fair

Reminders

Please report any absences, lates, early dismissals, etc. to our
Early Warning Line at (604) 668-6491

Let us know your child's name, division and WHY they are away and for how long.

If your child(ren) will be arriving late, please make sure to sign in so that we can adjust their attendance.

thank you!

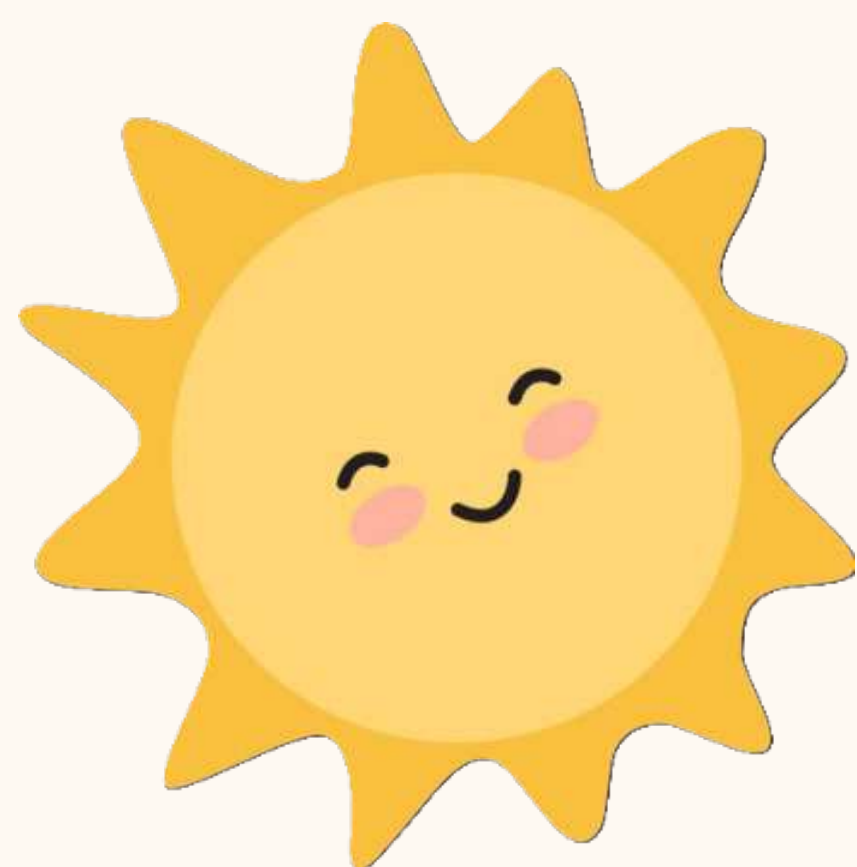
Friday, April 14

Vaisakhi, also pronounced Baisakhi as well as Basoa, marks the first day of the month of Vaisakh and is traditionally celebrated annually on 13 April and sometimes 14 April. It is seen as a celebration of spring harvest primarily in Northern India.

Have you checked out the Homma Website?

- get the latest news
- check out the latest WAAG
- calendar events
- important information
- and much more.....

Another beautiful day for **TRACK ATTACK**





NEWS



All parents and guardians of children who attend Homma Elementary School are members of the Homma PAC and are crucial partners in creating a rich and fulfilling school experience for our children.



Our next PAC meeting will be hosted on April 25 from 6:30 to 8:00 pm on MS Teams. Details are shared on the Homma website! Please join us for a school update and discussions about the spring fair and the PAC AGM. Send agenda items to contacthommapac@gmail.com.

Please save the date for May 16 - for the Homma PAC Annual General Meeting in- person. This is when we vote for our PAC executive and budget!

We are planning the Homma Spring Fair for Friday, May 26, 5:30 to 8:00 pm and are **looking for donations for the silent auction**. If any Homma families have businesses or new items to donate, they will be gratefully received! We are also looking for gift cards and event tickets!! All funds raised will go to our school community!

Please email us at contacthommapac@gmail.com

HOMMA SPRING FAIR



Hot Lunch Term 3 orders can be submitted online at <https://homma.hotlunches.net/>



Track Attack

Track Attack continues for students in Grades 4-7.

Please make sure all students come to school in proper foot wear and active wear.



**Track Meet will
be
Tuesday, May 9
at
Minoru Track**



SWIS

Settlement Workers
In Schools

SWIS CALENDAR - APRIL 2023

April 5	April 6	April 14	April 17	April 18	April 18	April 19
Summer Learning 	BC Graduation Requirements & ELL Learning in Secondary School 	Family Law Workshop 	Meet & Greet 	Meet & Greet 	Information Session on Summer Learning 	Girls Supporting Girls Youth Connections 
April 20	April 24	April 25	April 25	April 26	April 26	April 26
Summer Learning (中文翻译) 	Summer Learning 2023 	Youth Connections Badminton 	Summer Activities 	Helping teenagers to manage emotions 	Langara Field Trip 	Meet Thompson SWIS and Principal 
Weekly or Bi-Weekly Activities						
Mondays Bi-Weekly 	Tuesdays Bi-Weekly 	Wednesdays Bi-Weekly 	Thursdays Bi-Weekly 	Every Thursday 	Every Friday 	

Settlement workers in schools (SWIS) programs provide settlement support for immigrants, refugees and newcomers to help you adjust to your new surroundings.

Please see the attached APRIL CALENDAR for SWIS workshops and activities available this month.

For registration to any of the above workshops, please refer to the attached document on April 10 WAAG for links.



DROP OFF LANE AND PARKING LOT SAFETY

To ensure the safety of all students, **please do not park in the drop off lane and NO PARKING Zones** (you may be ticketed) to bring your child into the school as it disrupts the flow of traffic.

It would be **very helpful for cars not to left turn from Brunswick Dr** into the parking lot. Cars are unable to exit the parking lot thus causing an extreme back up for drop offs.

Please pull up as far as possible in the drop off lane when coming to school in the mornings.

Street parking is available on Railway Ave.

At the **end of the day, the drop off lane is closed** to vehicles and we ask that you do not remove the parking lot chain to enter.

As we are part of the community, we ask that we are courteous and respectful to our neighbours.

Thank you for your support with this.



Dress for the weather!

As our weather is changing and the rain starting, it might be helpful to bring:



winter coat



rain coat



rain boots



mittens



touque



scarf



extra clothing
including socks