



WEEK AT A GLANCE

HOMMA ELEMENTARY SCHOOL



June 12-16

Monday, June 12

Tuesday, June 13

Wednesday, June 14

Thursday, June 15

Friday, June 16

Cafe 15 from
6:30pm-8:30pm

Hot Lunch
Pizza

Freezie Friday @
2:45pm



Important Dates

- June 20.....Final PAC Meeting
- June 21.....Staff Appreciation
- June 23.....Grade 7 Farewell
- June 29.....Report Cards Home
- June 29.....Year End Assembly
- June 29.....Last Day of School

THANK YOU

We had an amazing day today!

A big thank you goes out to our Grade 7 students for doing a great job planning and leading stations. We also want to thank the Homma Sports Day Committee for their time and effort. We would also like to thank the Homma PAC for organizing hot lunch and providing the snack during break. We would also like to thank Homma students who did an exceptional job of showing school spirit and responsibility throughout the day. Finally, thank you Homma families for showing your support and cheering on the students.

Daily Health Check

SHOULD I GO TO SCHOOL TODAY?

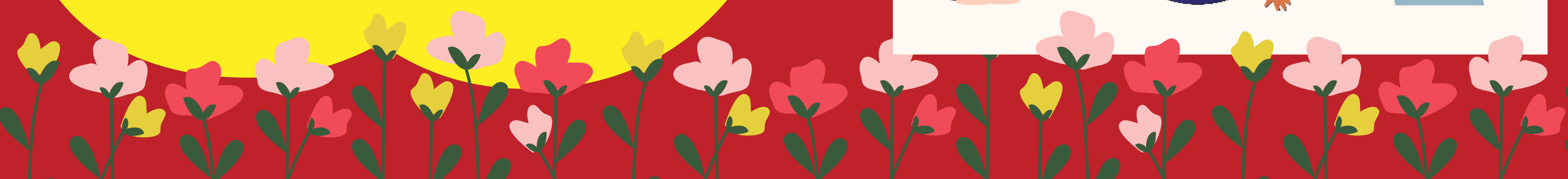
We appreciate your support in keeping your child home when they are not feeling well.

Students should not come to school when they are sick.

If your child is not feeling well please continue to keep them home until their symptoms have resolved. If you know your child will be absent for a range of days, please leave that information as well.

Staying home when sick helps keep our entire school community healthy including teachers, admin staff and students. **Please do your part and stay home when sick.**

Click here for the health assessment





NEWS



All parents and guardians of children who attend Homma Elementary School are members of the Homma PAC and are crucial partners in creating a rich and fulfilling school experience for our children.



Our final PAC Meeting of the school year will be hosted virtually on Zoom **Tuesday, June 20 (6:30 to 8:00 PM)**. We will be discussing the schedule of future PAC meetings and voting on our budget for the next school year. Please join us and share your thoughts! If you have any other agenda items to add, please let us know at contacthommapac@gmail.com



Homma Staff Appreciation Lunch

It's that time of the year again when we show our appreciation to our amazing Homma staff! The date for this year's staff appreciation lunch is set for Wednesday June 21, 2023 (noon – 12:50pm). With Homma staff's consent, we are excited to bring back the traditional potluck style luncheon this year!

Bring a Dish to Share

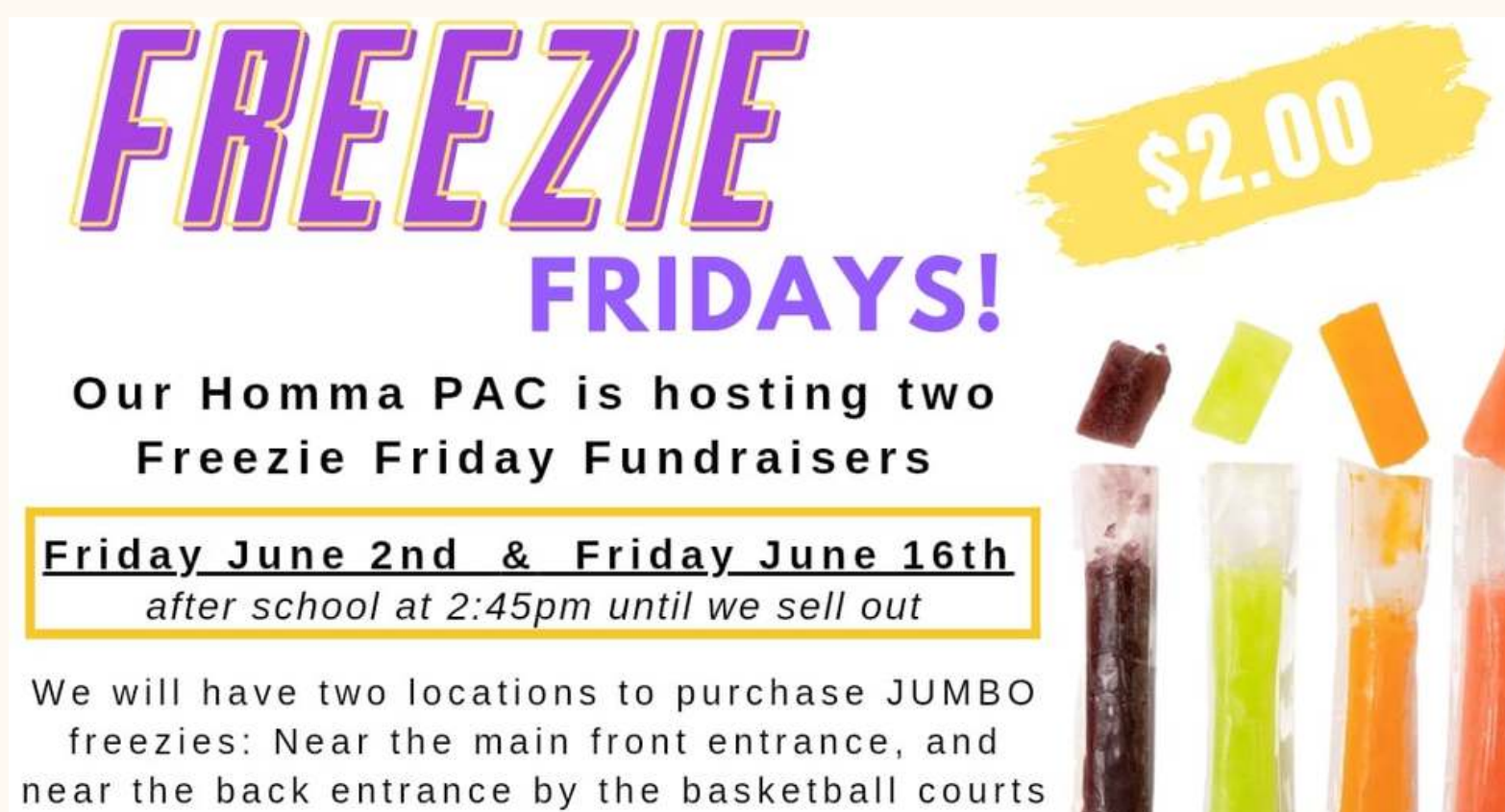
In past years, staff very much enjoyed the taste of multiculturalism and diversity through the variety of food prepared by Homma families. Please bring a dish or drink to share if you can, but it is not mandatory. The potluck sign-up sheet is available here:

2023 Homma Staff Luncheon Potluck Sign-up - [CLICK HERE](#)

Please read details on the sign-up sheet regarding the number of staff and staff's dietary restrictions.

Deadline: In order to assist with the planning of the event date, **please sign up before June 16, 2023**. Families who sign up will be contacted with additional details (drop off time etc.) closer to the event day. Meanwhile, please email hommaluncheon@gmail.com if you have any questions.

Thank you in advance for helping us appreciate our amazing Homma staff. As always, they have done an exceptional job teaching our children and helping them to grow.



FREEZIE FRIDAYS!

Our Homma PAC is hosting two Freezie Friday Fundraisers

Friday June 2nd & Friday June 16th
after school at 2:45pm until we sell out

We will have two locations to purchase JUMBO freezies: Near the main front entrance, and near the back entrance by the basketball courts

\$2.00



GROUP PHOTOS WERE
RECENTLY TAKEN AT
YOUR SCHOOL

**YOUR GROUP PHOTO IS
NOW AVAILABLE TO BE
PURCHASED**



To access your photo, please click the link in this email

Hello from your Edge Imaging photographer 😊

Recently we were in your school to take group photographs. Each student will be receiving a free class group photo as a keepsake for this school year. We have had requests from families that they would like the option to order other group photos that were also taken. Those photo(s) available for purchase are included here. We kindly ask if you could please forward the grad group link to your grads and the Panorama link to your school community to give them the option if they would like to have their own copy. Due to the late date in the school year all photos will be shipped to home. Thank you for your continued partnership with Edge Imaging. We really appreciate working with you!

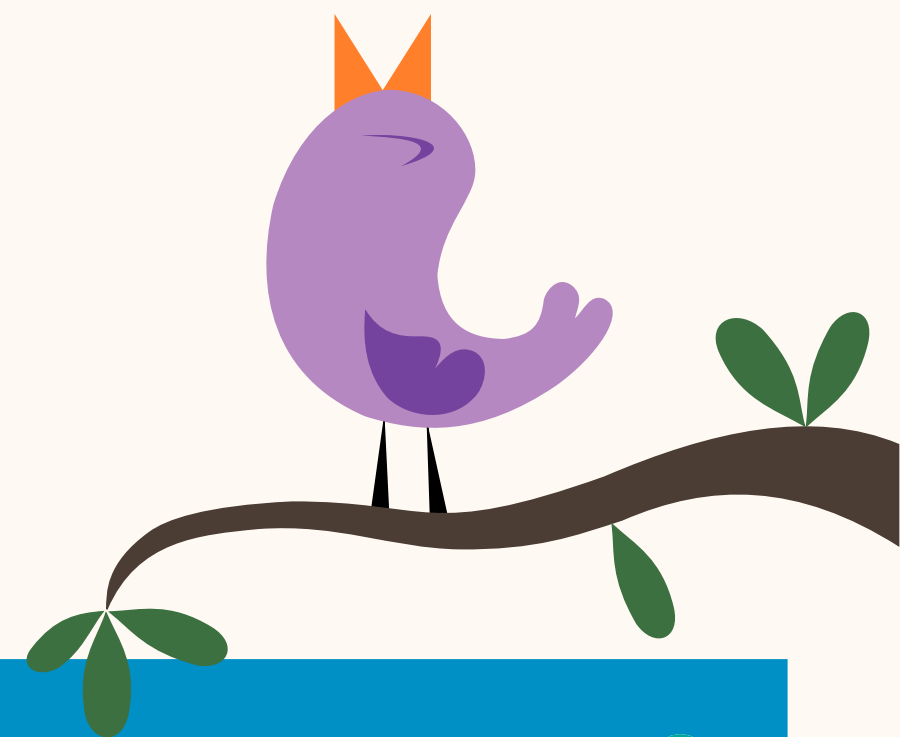
To purchase your group photo please choose the link(s):

Grade 7 Grad Group:

http://www.edgephotos.ca/edge-imaging-event-site?load/event_login/item/910032/category/0/access/PSQM23223RL

School Panorama:

http://www.edgephotos.ca/edge-imaging-event-site?load/event_login/item/910031/category/0/access/PSQM23123RL



**Have you checked out the
Homma Website?**

- get the latest news
- check out the latest WAAG
- calendar events
- important information
- and much more.....



homma.sd38.bc.ca



GET YOUR \$29 SUMMER ACTIVE PASS

All summer long

This affordable, unlimited pass is for 5 to 18 year olds to participate in select drop-in activities including:

- Swimming
- Skating
- Pitch & Putt Golf
- Fitness Centres
- Group Fitness
- Additional drop-in activities at community centres

Certain restrictions apply. See website for details.

**PURCHASE A
PASS TODAY**



**VALID JUNE 10 TO SEPTEMBER 4, 2023
FIND ALL LOCATIONS AND DETAILS
WWW.RICHMOND.CA/SUMMERPASS**





If your child needs to leave school early.....

If your child needs to leave early for an appointment or needs to be pulled from school for any reason, **PLEASE** email your teacher and the Homma Office homma@sd38.bc.ca

This will be less disruptive to the rest of the class if the teacher knows ahead of time that a student will be leaving. Thank you!



Reminders

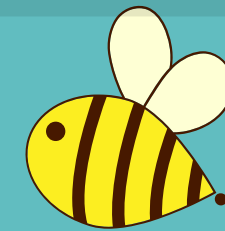
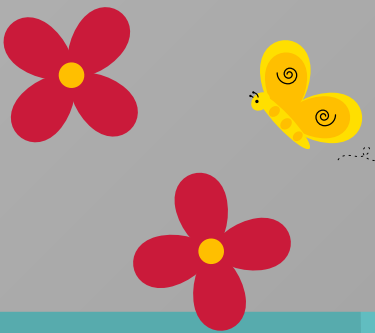
Please report any absences, lates, early dismissals, etc. to our

Early Warning Line at (604) 668-6491

Let us know your child's name, division and WHY they are away and for how long.

If your child(ren) will be arriving late, please make sure to sign in so that we can adjust their attendance.

thank you!



DROP OFF LANE AND PARKING LOT SAFETY

To ensure the safety of all students, **please do not park in the drop off lane and NO PARKING Zones** (you may be ticketed) to bring your child into the school as it disrupts the flow of traffic.

It would be **very helpful for cars not to left turn from Brunswick Dr** into the parking lot. Cars are unable to exit the parking lot thus causing an extreme back up for drop offs.

Please pull up as far as possible in the drop off lane when coming to school in the mornings.

Street parking is available on Railway Ave.

At the **end of the day, the drop off lane is closed** to vehicles and we ask that you do not remove the parking lot chain to enter.

As we are part of the community, please be mindful when parking on the streets in the surrounding area and do not block our neighbours' driveways. Thank you for being courteous and respectful to our neighbours.

Thank you for your support with this.